

**STANDARD ARRIVAL
CHART INSTRUMENT
(STAR) - ICAO**

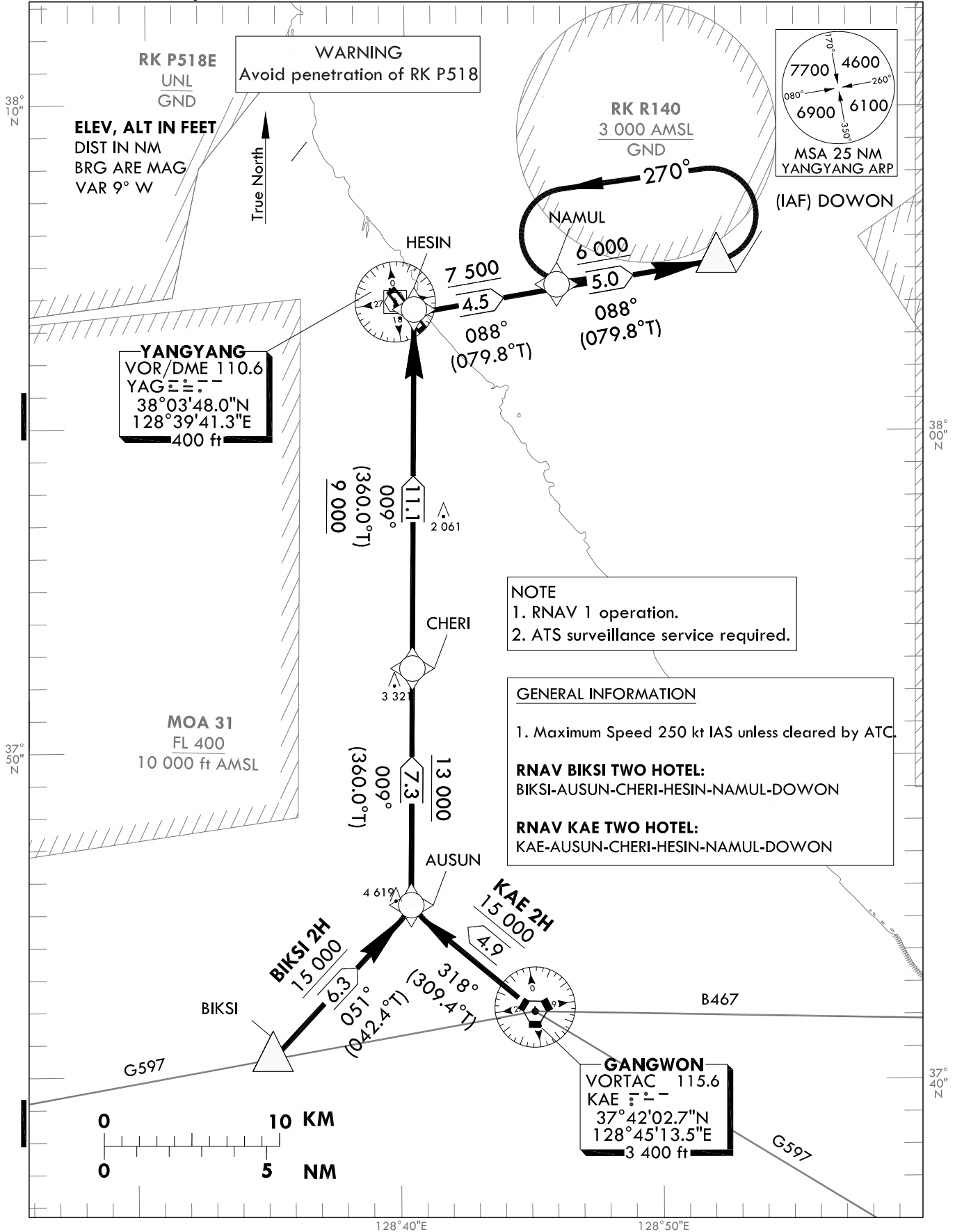
Note : Arrival under ICAO Flight Procedures.

TRANSITION ALT 14 000
TRANSITION LVL FL140

GANGNEUNG APP 124.6
YANGYANG TWR 118.85
124.375

YANGYANG/Intl(RKNY)

RWY 33
RNAV KAE 2H
RNAV BIKSI 2H



YANGYANG Int(RKNY)
RWY 33
RNAV KAE 2H
RNAV BIKSI 2H

AERONAUTICAL DATA TABULATION

Standard Instrument Arrival Procedure Coding Tables

RNAV KAE 2H												
Serial Number	Path Descriptor	Waypoint Identifier	Fly-over	Course/Track °M(°T)	Distance (NM)	Turn direction	Altitude (ft)	Speed (kt)	Coordinates	VPA/TCH*	Navigation specification	Remarks
001	IF	KAE	-	-	-	-	-	-	37°42'02.8"N 128°45'13.6"E	-	RNAV 1	-
002	TF	AUSUN	-	318(309.4)	4.9	-	+15 000	-	37°45'11.2"N 128°40'24.7"E	-	RNAV 1	-
003	TF	CHERI	-	009(000.0)	7.3	-	+13 000	-	37°52'29.4"N 128°40'25.1"E	-	RNAV 1	-
004	TF	HESIN	-	009(000.0)	11.1	-	+9 000	-	38°03'34.1"N 128°40'25.8"E	-	RNAV 1	-
005	TF	NAMUL	-	088(079.8)	4.5	-	+7 500	-	38°04'21.6"N 128°45'59.8"E	-	RNAV 1	-
006	TF	DOWON	-	088(079.8)	5.0	-	+6 000	-	38°05'14.5"N 128°52'13.8"E	-	RNAV 1	IAF

RNAV BIKSI 2H												
Serial Number	Path Descriptor	Waypoint Identifier	Fly-over	Course/Track °M(°T)	Distance (NM)	Turn direction	Altitude (ft)	Speed (kt)	Coordinates	VPA/TCH*	Navigation specification	Remarks
001	IF	BIKSI	-	-	-	-	-	-	37°40'32.0"N 128°35'04.0"E	-	RNAV 1	-
002	TF	AUSUN	-	051(042.4)	6.3	-	+15 000	-	37°45'11.2"N 128°40'24.7"E	-	RNAV 1	-
003	TF	CHERI	-	009(000.0)	7.3	-	+13 000	-	37°52'29.4"N 128°40'25.1"E	-	RNAV 1	-
004	TF	HESIN	-	009(000.0)	11.1	-	+9 000	-	38°03'34.1"N 128°40'25.8"E	-	RNAV 1	-
005	TF	NAMUL	-	088(079.8)	4.5	-	+7 500	-	38°04'21.6"N 128°45'59.8"E	-	RNAV 1	-
006	TF	DOWON	-	088(079.8)	5.0	-	+6 000	-	38°05'14.5"N 128°52'13.8"E	-	RNAV 1	IAF

HOLDING PROCEDURE												
Holding Identification	Path Descriptor	Waypoint Identifier	Fly-over	Course/Track °M(°T)	Distance (NM)	Turn direction	Altitude (ft)	Speed (kt)	Coordinates	VPA/TCH*	Navigation specification	Remarks
RNAV KAE 2H	HM	DOWON	Y	090(081.7)	1	L	@6 000	-200	38°05'14.5"N 128°52'13.8"E	-	RNAV 1	1 Min (Outbound Leg)
RNAV BIKSI 2H	HM	DOWON	Y	090(081.7)	1	L	@6 000	-200	38°05'14.5"N 128°52'13.8"E	-	RNAV 1	1 Min (Outbound Leg)

* The term TCH equates to the use of the term RDH, within this context of the FAS data block.